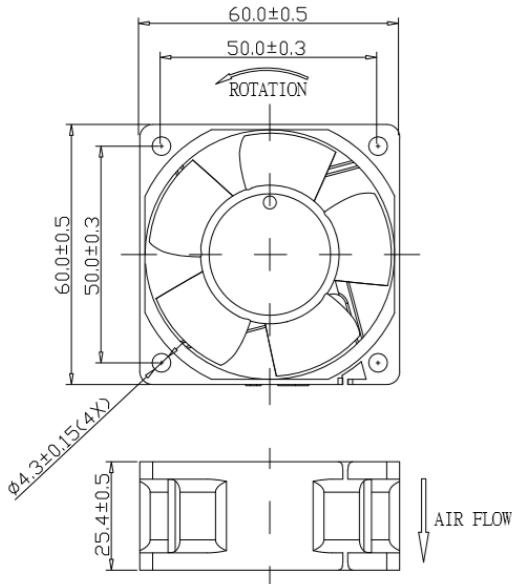


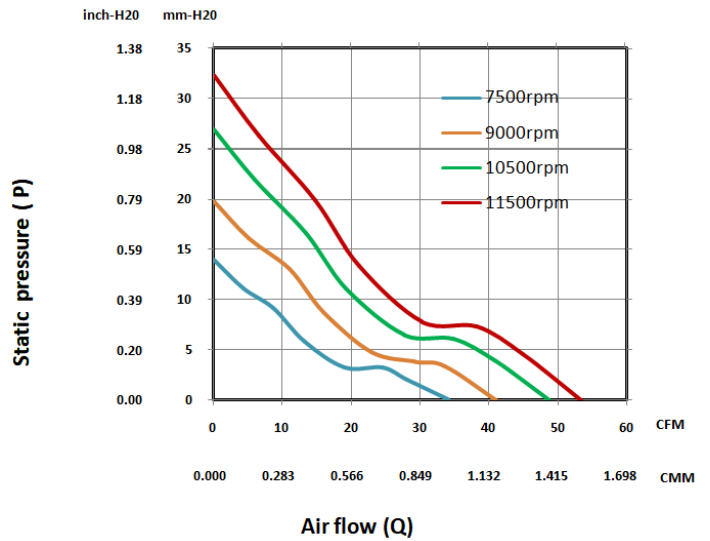
**60 x 60 x 25 mm Series**

**Rev. V**

**Dimensions**



**Performance Curve**



General Specification	
Frame	PBT 94V-0
Impeller	PBT 94V-0
Lead Wire	UL1007 24AWG
Storage Temperature	-20°C ~ 80°C
Operating Temperature	-10°C ~ 75°C
Mass	60 gram

Bearing Type	Function Options
<input checked="" type="radio"/> CeraDyna A	<input checked="" type="radio"/> Auto Restart
<input type="radio"/> CeraDyna C	<input checked="" type="radio"/> Frequency Generator
<input checked="" type="radio"/> Ball Bearing	<input type="radio"/> Rotation Detect
<input checked="" type="radio"/> Sleeve Bearing	<input type="radio"/> Temperature Control
<input type="radio"/> Fluid Dynamic Bearing	<input checked="" type="radio"/> PWM Control

\*Air exhaust over struts. Rotational direction CCW looking at rotor

\*The motor is with electronic protection against reverse polarity. The motor only operates when the polarity is correct.

**Specifications**

Model No.	Rated Voltage (V)	Rated Current (A)	Input Power (W)	Nominal Speed (RPM)	Airflow (CFM)	Static Pressure (Inch-H2O)	SPL (dB A)
FD2460-X04XXE	24	0.46	11.04	11500	53.40	1.27	57.5
FD2460-X14XXE	24	0.37	8.88	10500	48.76	1.06	55.5
FD2460-X24XXE	24	0.27	6.48	9000	40.96	0.78	50.8
FD2460-X34XXE	24	0.18	4.32	7500	33.99	0.55	46.2

\*All readings are typical value at rated voltage.

\*Please refer to **PART NUMBER SYSTEM** for bearing type and part number "XX" designation.

\*Please specify revision number when ordering.